

# AMERICAN BOARD OF ORTHODONTICS

## discrepancy index applied in first and second-phase university clinics

*Indice de discrepancia del Consejo Americano de Ortodoncia  
en clinicas de primera y segunda fase universitarias*

POR

OSWALDO JESÚS **MEJÍAS ROTUNDO**<sup>1</sup>

<sup>1</sup> Cátedra de Ortodoncia y Ortopedia Dentofacial.  
Universidad José Antonio Páez. Carabobo, Venezuela

**Autor de correspondencia:** Oswaldo Mejías Rotundo.  
Consultorio Odontológico “La Trinidad” calle Anzoátegui 10-A.  
Municipio San Diego. Carabobo, Venezuela. Zip: 2006  
Teléfono: 00584244913132-00582418911902  
[mejiasrotundo@gmail.com](mailto:mejiasrotundo@gmail.com)

## Abstract

The aim of this study was to test the null hypothesis: there's no differences in malocclusion discrepancy in Carabobo and José Antonio Páez Universities (UC and UJAPU respectively). ABO-DI definer los tests was applied in 50 continuous case discussion from August to December 2017. Descriptive and normality tests were calculated. Then Man-Whitney test was used to compare individual variables meanwhile t-test was used in total score. UC American Board Discrepancy Index (ABO-DI) total (12.520 StDev 7,445), UJAP ABO-DI total (13.960 StDev 9.076). when comparing medians, differences were present only at Crowding ( $p= 0.0442$ ), ANB ( $p= 0.0321$ ) and Others characteristics ( $p= 0.0323$ ). Null hypothesis is accepted, patients who attended to X and Y for orthodontic purpose have the same discrepancy, regardless of age and occlusal characteristic.

**KEY WORDS (MeSH):** malocclusion, observer variation, universities, orthodontics

## Resumen

El objetivo de este estudio fue comprobar que no existen diferencias en la discrepancia de maloclusiones entre los pacientes niños y adultos que fueron atendidos en las de las Universidades de Carabobo y la Universidad José Antonio Páez (UC and UJAPU respectivamente) en 50 discusiones de historias de Agosto a Diciembre de 2017. Fue calculada le estadística descriptiva y prueba de normalidad. Posteriormente se aplicaron pruebas de comparación Man-Whitney para cada variable individual y la prueba t para el puntaje final. El resultado del mencionado índice en la UC fue de 12,520, Desviación estándar 7,445 y en la UJAP el índice fue 13,960 y Desviación estándar 9,076. A la comparación de medianas, se encontraron diferencias solamente en apiñamiento ( $p= 0,0442$ ), ANB ( $p= 0,0321$ ) y otras características ( $p= 0,0323$ ). Se acepta la hipótesis nula, los pacientes que asistieron a ambas universidades por razones ortodónticas tienen la misma dificultad, indiferentemente de la edad o característica oclusal.

**PALABRAS CLAVE (DeCS):** maloclusión, variaciones dependientes del observador, universidades, ortodoncia.

---

## Introduction

Malocclusion is the single most frequent growth alteration in the oral cavity, whose etiology range from local factors to environmental-genetic influence<sup>1</sup>. However, as multiple occlusal combinations may arise, from single dental displacement to great skeletal discrepancies, the decision to start treatment is met when this condition is severe enough that affect patient's selfesteem<sup>1</sup>.

Likewise, orthodontic practitioners have developed several indexes<sup>2-7</sup> to determine orthodontic definitive treatment, severity, forecast duration and realistic expectation of outcomes. From those indexes, The American Board of Orthodontics Discrepancy Index (ABO-DI) use calibrated instruments, plus a combination of dental and radiographic measurements to establish occlusal discrepancy while enhancing examiner reliability, as stated from their creators<sup>8</sup>.

Although there's information about treatment results from early vs. late orthodontic treatment<sup>9-13</sup>, this topic remains controversial. No studies have quantified initial discrepancy between adults and children. The purpose of this investigation is to test the null hypothesis, that there's no differences in malocclusion discrepancy in Universities of Carabobo (UC) and Jose Antonio Páez (UJAP). UC provides mainly fixed treatment in adults while UJAP offers first treatment therapy center.

---

## Materials and methods

A descriptive, transversal, non-experimental design was applied. The inclusion criteria was a case discussion evaluation between students and the author in both Universities' Orthodontics clinics from August-December 2017. The main variables were based as described by the American Board of Orthodontics (ABO)<sup>8</sup>: *Overjet*: Greatest anterior posterior distance from vestibular face of lower incisor to incisal edge of the most protrude upper incisor. When an edge to edge or anterior cross bite is present, 1pt will be scored per mm in negative overjet. *Overbite*: Greatest vertical distance between incisal edges to theirs antagonist. *Anterior Open bite (Ant. open)*: Measured from incisal edges per antagonist from canine to canine up the greatest distance of any tooth with an open bite condition. Any integer number above 0.5 while be rounded up. Blocked tooth by crowding or partial eruption will be excluded. *Lateral Open bite (Lat. open)*: absent of interdigtation greater than 0.5 mm from their antagonist starting in first bicuspid to the last molar. Blocked tooth by crowding or partial eruption will be excluded. *Crowding*: Greatest osseous-dental discrepancy between arch and dentition from first molar mesial surfaces. The evaluation is only performed in the most crowded arch. *Occlusal relation*: Angle's guidelines whit models in full interdigtation. *Crossbite (X-bite ling)*: Any displacement of buccal cusp to palate from maxillary teeth

greater than 0 mm from antagonist buccal cusp (from bicusp to second molars). *Scissor bite (X-bite buc)*: Any displacement of palate cusp to buccal greater than 0 mm from antagonist buccal cusp (from bicusp to second molars). *Cephalometric*: Total scores from ANB, SN-Go/Me and IMPA angles. Since it's a complex variable, each angle and its total would be tabulated. *Others*: Alterations like supernumeraries, ankylosis, anomalous dental morphology, impacted tooth (except third molars), missing teeth, midlines discrepancies from 4mm, dental transposition, non-surgical treated skeletal asymmetries. *ABO-DI total*: Sum of individual scores from main variables without cut-off point.

Secondary variables: *University*: UC and UJAP.

All measurements were done by main author using ABO calibrated gauge under the same conditions. Previously, author calibration was done following guidelines from YouTube's ABO channel<sup>14</sup>. ABO-DI scoresheet<sup>15</sup> was used to score each case.

The statistical analysis applied were mean, median, standard deviation, standard error of mean and mode were calculated for both groups. Afterward, Anderson-Darling normality test was performed to all main variables. According to normality test results, mean or median difference test were performed between groups. Minitab Express Software for Mac was used.

---

## Results

Research results are from **TABLE 1 TO 5**. In overall, low and no scores were presents for all variables (**TABLE 1 AND 2**). Even so, UC mean scores were: Cephalometric (2.680), Crowding (2.120), Occlusal relation (1.440) and ABO-DI total (12.520 St-Dev 7.445). On the contrary, UJAP had: Cephalometric (7) Occlusal relation (1.800), Overjet (1.640) and ABO-DI total (13.960 StDev 9.076).

Normality test were accepted for all variables except ABO-DI total (**TABLE 3**). For this reason, all further statistical comparison were non-parametric, highlighting that no scissor bite was found in UJAP's University, blocking any further comparison on that aspect.

Mann-Whitney median test (**TABLE 4**) showed differences for Crowding ( $P=0.0442$ ), ANB ( $P=0.0321$ ) and others ( $P=0.0323$ ). With respect of ABO-DI total, t-test for mean was 1.44 ( $P=0.5427$  CI = -6,166; 3,283) therefore accepting null hypothesis of absence of discrepancy between Universities (**FIGURE 1**).

---

## Discussion

Patients diagnosed for malocclusion from both Universities under the study period had a low discrepancy with different occlusal characteristics. UC's cases had a crowding range from 3 to 5 mm plus Angle's key alterations with Lower incisor

protrusion. On the other hand, UJAP's cases showed skeletal whit Angle's key alterations plus Overjet. ABO-DI's total from both Universities are lower to current literature<sup>13,16-20</sup>.

Reported literature from first and comprehensive treatment at universities shows same prevalence of main variables as scored in this paper<sup>12,13,16,17,19,20</sup>. This is significant, because it certifies patient's definitive treatment is needed with enough discrepancy for teaching and research.

Skeletal features and Overjet found in UJAP's patients are suitable to treat with functional appliances as had been reported in previous studies<sup>9,10,12,13,21,22</sup>.

With regards to limitations found in this research, there were not performing and reporting systematic errors for measurements and a small sample size. Therefore, further research is recommended to evaluate discrepancy trends and treatment effectiveness, as suggested by recent systematic reviews<sup>22,23,26</sup>.

**TABLE 1.**

ABO-DI FROM UNIVERSITY OF CARABOBO

VARIABLE	N	N*	MEAN	STDEV	SE MEAN	MODE	N FOR MODE
Overjet	25	0	1.360	1.729	0.345	0	13
Overbite	25	0	0.840	1.179	0.235	0	16
Anterior open bite	25	0	0.840	2.374	0.475	0	22
Lateral open bite	25	0	0.400	1.414	0.282	0	23
Crowding	25	0	2.120	2.521	0.504	0	9
Occlusal relation	25	0	1.440	2.200	0.440	0	15
Crossbite (X-bite ling)	25	0	0.240	0.723	0.144	0	22
Scissor bite (X-bite buc)	25	0	0.240	0.879	0.175	0	23
Cephalometric	25	0	2.680	3.986	0.797	0	9
ANB	24	1	0.7919	1.8173	0.3710	0	20
SN-Go/Me	24	1	0.6667	1.7611	0.3595	0	19
IMPA	24	1	1.7083	2.8050	0.5726	0	15
Others	25	0	1.280	1.768	0.353	0	13
ABO-DI Total	25	0	12.520	7.445	1.489	6.10	3

**TABLE 2.**  
 ABO-DI FROM UNIVERSITY JOSÉ ANTONIO PÁEZ

VARIABLE	N	N*	MEAN	STDEV	SE MEAN	MODE	N FOR MODE
Overjet	25	0	1.640	1.604	0.320	0	9
Overbite	25	0	0.720	1.601	0.212	0	16
Anterior open bite	25	0	1.080	3.054	0.610	0	21
Lateral open bite	25	0	0.080	0.400	0.080	0	24
Crowding	25	0	1.040	2.030	0.406	0	16
Occlusal relation	25	0	1.800	2.121	0.424	0	12
Crossbite (X-bite ling)	25	0	0.320	0.988	0.197	0	22
Scissor bite (X-bite buc)	25	0	0	0	0	0	25
Cephalometric	25	0	7.000	6.770	1.354	0	9
ANB	24	1	2.20	2.7343	0.5581	0	13
SN-Go/Me	24	1	3.333	5.297	1.081	0	15
IMPA	24	1	1.3750	3.5851	0.7318	0	18
Others	25	0	0.400	0.816	0.163	0	20
ABO-DI Total	25	0	13.960	9.076	1.815	6	3

**TABLE 3.**  
 ANDERSON DARLING NORMALITY TEST

VARIABLE	N	MEAN	STDEV	AD-VALUE	P
Overjet	50	1.500	1.656	3.41	<0.0050
Overbite	50	0.780	1.111	7.61	<0.0050
Anterior open bite	50	0.960	2.710	13.75	<0.0050
Lateral open bite	50	0.240	1.041	16.99	<0.0050
Crowding	50	1.580	2.330	6.15	<0.0050
Occlusal relation	50	1.620	2.146	4.77	<0.0050
Crossbite (X-bite ling)	50	0.280	0.858	14.62	<0.0050
Scissor bite (X-bite buc)	50	0.120	0.627	17.91	<0.0050
Cephalometric	50	5.340	5.748	2.81	<0.0050
ANB	48	1.50	2.4057	0.54	<0.0050
SN-Go/Me	48	2.00	4.1308	9.21	<0.0050
IMPA	48	1.5417	3.1888	8.94	<0.0050
Others	50	0.840	1.433	7.29	<0.0050
ABO-DI Total	50	13.240	8.248	0.67	0.0758

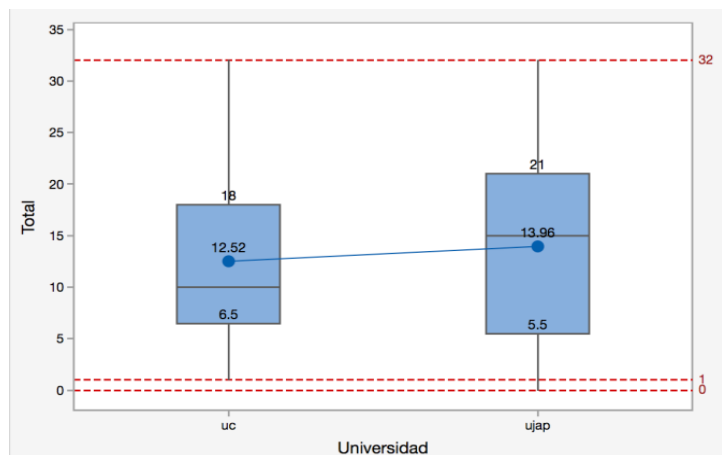
\*= Statistical difference

**TABLE 4.**

MANN-WHITNEY TEST FOR MEDIAN DIFFERENCES BY UNIVERSITY \*\*= NOT CALCULATE FOR ABSENCE OF TWO UNIQUE VALUES.

VARIABLE	UNIVERSITY	MEDIAN	DIFFERENCE	CI FOR DIFFERENCE 95%	P- VALUE ADJUSTED FOR TIES
Overjet	UC	0	0	-1;0	0.4314
	UJAP	2			
Overbite	UC	0	0	0;0	0.8199
	UJAP	0			
Anterior open bite	UC	0	0	0;0	0.7235
	UJAP	0			
Lateral open bite	UC	0	0	0;0	0.5400
	UJAP	0			
Crowding	UC	1	1	0;2	0.0442*
	UJAP	0			
Occlusal relation	UC	0	0	-2;0	0.4180
	UJAP	2			
Crossbite (X-bite ling)	UC	0	0	0;0	0.9726
	UJAP	0			
Scissor bite (X-bite buc)	UC	0	**	**	**
	UJAP	-			
Cephalometric	UC	4	-2	-7;0	0.1463
	UJAP	7			
ANB	UC	0	0	-3;0	0.0321*
	UJAP	0			
SN-Go/Me	UC	0	0	-2;0	0.1029
	UJAP	0			
IMPA	UC	0	0	0;0	0.3594
	UJAP	0			
Others	UC	0	0	0;2	0.0323*
	UJAP	0			

**FIGURE 1.**  
BOXPLOT FOR ABO-DI TOTAL T-TEST.



---

## Conclusion

Null hypothesis is accepted, patients who attended to UJAP and UC for orthodontic purpose have equal discrepancy, regardless of age and occlusal characteristic.

---

## Bibliographic

- 1 Proffit W, Fields H, Sarver D. The Orthodontic Problem, [in: Proffit W, Fields H, Sarver D. Contemporary Orthodontics. Chapter 1: 4ed. Mosby Elsevier] 2006
- 2 Liu S, Oh H, Chambers DW, Baumrind S, Xu T. Validity of the American Board of Orthodontics Discrepancy Index and the Peer Assessment Rating Index for comprehensive evaluation of malocclusion severity. *Orthod Craniofac Res*, 2017;20(3):140-145. doi: 10.1111/ocr.12195.
- 3 Ayala T, García S, Rivera D. Prevalencia de maloclusion y necesidad de tratamiento ortodóntico en niños con dentición mixta en cuatro centros escolares utilizando el índice de estética dental durante el año 2015. Tesis doctoral, Universidad de El Salvador. Disponible: <http://ri.ues.edu.sv/14371/1/17100429.pdf>
- 4 Gálvez-Armenta A, Velázquez-Luna J. Frecuencia de maloclusiones en pacientes con dentición mixta de la clínica de la Especialidad en Odontopediatría de la Universidad Autónoma de Sinaloa. *Rev Tamé* 2016; 5 (14): 482-484. Disponible: [http://www.uan.edu.mx/d/a/publicaciones/revista\\_tame/numero\\_14/Tam1614-03i.pdf](http://www.uan.edu.mx/d/a/publicaciones/revista_tame/numero_14/Tam1614-03i.pdf)
- 5 Heath EM, English JD, Johnson CD, Swearingen EB, Akyalcin S. Perceptions of orthodontic case complexity among orthodontists, general practitioners, orthodontic residents, and dental students. *Am J Orthod Dentofacial Orthop*, 2017;151(2):335-341. doi: 10.1016/j.ajodo.2016.06.045.
- 6 Luzzi V, Lerardo G, Corridore D, Di Carlo G, Di Giorgio G, Leonardi E et al. Evaluation of the orthodontic treatment need in a paediatric sample from Southern Italy and its importance among pediatricians for improving oral health in pediatric dentistry. *J Clin Exp Dent*. 2017;9(8):995-e1001. doi: 10.4317/jced.54005. eCollection 2017 Aug. Disponible: <https://www.ncbi.nlm.nih.gov/pmc/articles/pmid/28936290/>
- 7 Skidmore KJ, Brook KJ, Thomson WM, Harding WJ. Factors influencing treatment time in orthodontic patients. *Am J Orthod Dentofacial Orthop*, 2006;129:230-238.
- 8 American Board of Orthodontics. ABO-Discrepancy Index. Disponible: [https://www.americanboardortho.com/media/1189/discrepancy\\_index\\_scoring\\_system.pdf](https://www.americanboardortho.com/media/1189/discrepancy_index_scoring_system.pdf)
- 9 Tsung-Ju H, Pinskaya Y, W. Eugene Roberts E. Assessment of Orthodontic Treatment Outcomes: Early Treatment versus Late Treatment. *The Angle Orthodontist*, 2005;75(2):162-170.
- 10 Baccetti T, Franchi L, Giuntini V, Masucci C, Vangelisti A, Defraia E. Early vs late orthodontic treatment of deep bite: A prospective clinical trial in growing subjects. *American Journal of Orthodontics and Dentofacial Orthopedics*, 142(1):75 - 82 Doi: <https://doi.org/10.1016/j.ajodo.2012.02.024>



- 11 Lopes Filho H, Maia LH, Lau TCL, G. de Souza M, Maia LC. Early vs late orthodontic treatment of tooth crowding by first premolar extraction: A systematic review. *The Angle Orthodontist*, 2015;85(3):510-517. Doi: <https://doi.org/10.2319/050814-332.1>
- 12 Mirabelli JT, Huang GJ, Siu CH, King GJ, Omnell L. The effectiveness of phase I orthodontic treatment in a Medicaid population. *Am J Orthod Dentofacial Orthop*. 2005;127(5):592-598.
- 13 Vasilakou N, Araujo EA, Kim KB, Oliver DR. Quantitative assessment of the effectiveness of phase I orthodontic treatment using the American Board of Orthodontics Discrepancy Index. *Am J Orthod Dentofacial Orthop*. 2016;150(6):997-1004. doi: 10.1016/j.ajodo.2016.05.012.
- 14 Youtube [Internet]. DI Form Measurement Demonstration. [Updated: 2011 March 23; cited 30 January 2018]. [About 3 videos] Available: <https://www.youtube.com/watch?v=bwJvKkAXKws&list=PL77EFD9FFDAB37B0>
- 15 American Board of Orthodontics. ABO-Discrepancy Index score sheet. Disponible: <https://www.americanboardortho.com/media/1186/discrepancy-index-worksheet-for-print.pdf>
- 16 Campbell CL, Roberts WE, Hartsfield JK Jr, Qi R. Treatment outcomes in a graduate orthodontic clinic for cases defined by the American Board of Orthodontics malocclusion categories. *Am J Orthod Dentofacial Orthop*., 2007;132(6):822-829.
- 17 Vu CQ, Roberts WE, Hartsfield JK Jr, Ofner S. Treatment complexity index for assessing the relationship of treatment duration and outcomes in a graduate orthodontics clinic. *Am J Orthod Dentofacial Orthop*. 2008;133(1):9-13. doi: 10.1016/j.ajodo.2007.08.012.
- 18 Cansunar HA, Uysal T. Relationship between pretreatment case complexity and orthodontic clinical outcomes determined by the American Board of Orthodontics criteria. *Angle Orthod*. 2014;84(6):974-979. doi: 10.2319/010114-001.1. Epub 2014 Apr 2
- 19 Pangrazio V, Kang HK, Dhawan A, Al-Qawasmí R, Rocha R. Comparison of early treatment outcomes rendered in three different types of malocclusions. *The Angle Orthodontist*: May 2018;88(3): 253-258. <https://doi.org/10.2319/091417-618.1>
- 20 Parrish L, Roberts WE, Maupome G, Stewart K, Bandy RW, Kula K. The relationship between the ABO discrepancy index and treatment duration in a graduate orthodontic clinic. *The Angle Orthodontist*, 2011;81( 2):192-197. <https://doi.org/10.2319/062210-341.1>
- 21 Oh H, Baumrind S, Korn EL, Dugoni S, Boero R, Aubert M, Boyd R. A retrospective study of Class II mixed-dentition treatment. *Angle Orthod*, 2017;87(1):56-67. doi: 10.2319/012616-72.1. Epub 2016 Jul 8.
- 22 Thiruvenkatachari B, Harrison JE, Worthington HV, O'Brien KD. Orthodontic treatment for prominent upper front teeth (Class II malocclusion) in children. *Cochrane Database Syst Rev*, 2013;13(11):CD003452. doi: 10.1002/14651858.CD003452.pub3.

- 23 Papageorgiou S, Höchli D, Eliades, T. Outcomes of comprehensive fixed appliance orthodontic treatment: A systematic review with meta-analysis and methodological overview. *Korean Journal of Orthodontics*. 47:401-413. 10.4041/kjod.2017.47.6.401.
- 24 De Sousa RV, Ribeiro GL, Firmino RT, Martins CC, Granville-Garcia AF, Paiva SM. Prevalence and associated factors for the development of anterior open bite and posterior crossbite in the primary dentition. *Braz Dent J*, 2014;25(4):336-42.
- 25 Machado DB, Brizon VS, Ambrosano GM, Madureira DF, Gomes VE, de Oliveira AC. Factors associated with the prevalence of anterior open bite among preschool children: a population-based study in Brazil. *Dental Press J Orthod*, 2014;19(5):103-109. doi: 10.1590/2176-9451.19.5.103-109.oar
- 26 Woon SC, Thiruvengkatachari B. Early orthodontic treatment for Class III malocclusion: A systematic review and meta-analysis. *Am J Orthod Dentofacial Orthop*, 2017;151(1):28-52. doi: 10.1016/j.ajodo.2016.07.017.